



Rüger & Günzel Contour/Grisaille
Opaque resistant colors

- F6371 Sepia (matt) - 100 g. (3.5 oz)
- F1591 Black green (satin matt) - 100 g. (3.5 oz)
- F6360 Iron red (satin gloss) - 100 g. (3.5 oz)
- F6363 Maroon (satin gloss) - 100 g. (3.5 oz)
- F6322 Dark brown (matt) - 100 g. (3.5 oz)
- F4104 Black (satin gloss) - 150 g. (5.2 oz)



10 min 580-620°C / 1076-1148°F
Voor gebruik op glas.
Bestendig, opaak.
Meng met water of olie.

For use on glass.
Resistant, opaque.
Mix with water or oil.

Rüger & Günzel "Meissen Palette"

- F9096 White - 100 g. (3.5 oz)
- RGF103 Egg yellow - 100 g. (3.5 oz)
- F1249 Russian green - 100 g. (3.5 oz)
- RGF311 Blue - 100 g. (3.5 oz)
- F7241/S Dark red - 100 g. (3.5 oz)
- RGF60 Brown - 100 g. (3.5 oz)
- RGF60/C Brown - 100 g. (3.5 oz)
- Black - 100 g. (3.5 oz)



5 min 720-800°C / 1328-1472°F
Voor gebruik op glas of keramiek.
Niet bestendig, opaak.
Meng met water of olie.

For use on glass or ceramics.
Non-resistant, opaque.
Mix with water or oil.

Rüger & Günzel Transparent Colors

- P7182 Antique Red - 25 g. (0.9 oz)
- P7304 Rose purple - 25 g. (0.9 oz)
- RGF338 Yellow - 50 g. (1.8 oz)
- F1147 Green - 50 g. (1.8 oz)
- F2102 Blue - 50 g. (1.8 oz)
- F6069 Brown - 50 g. (1.8 oz)



5 min 560-620°C / 1040-1148°F
Voor gebruik op glas.
Niet bestendig, transparant.
Glanzend.
Meng met water of olie.

For use on glass.
Non-resistant, transparent.
Glossy.
Mix with water or oil.

Rüger & Günzel Resistant Colors

- F9723 White - 100 g. (3.5 oz)
- F3128 Yellow - 100 g. (3.5 oz)
- F7375 Red - 100 g. (3.5 oz)
- F2725 Blue - 100 g. (3.5 oz)
- F6726 Dark brown - 100 g. (3.5 oz)
- F4723 Black - 100 g. (3.5 oz)



10-15 min 580-640°C / 1076-1184°F
Voor gebruik op glas of aardewerk.
Bestendig, opaak, glanzend.
Meng met water of olie.

For use on glass or earthenware.
Resistant, opaque, glossy.
Mix with water of oil.

Silver Stains

- Rüger & Günzel P73028 - 25 g. (0.9 oz)
- Reusche Yellow #3 (1384) - 40 g. (1.4 oz)
- Reusche Orange #2 (1383) - 40 g. (1.4 oz)



5 min 580°C / 1076°F
Voor gebruik op glas.
Bestendig, transparant.
Glanzend.
Meng met water of olie.

For use on glass.
Resistant, transparent.
Glossy.
Mix with water of oil.

Reusche Classic Paints
(with lead or lead-free)

- Tracing Black - 150 g. (5.2 oz)
- Bistre Brown (DE402 / 56R002) - 50 g. (1.8 oz)
- Umber Brown (Sepia) (1139E / 56R001) - 50 g.
- Tracing Brown #1 (1134 / 56R023) - 50 g. (1.8 oz)
- Gum Arabic - 75 ml.



5 min 648-677°C / 1200-1250°F (with lead)
5 min 621-760°C / 1150-1400°F (lead-free)

Lead-containing paints
Voor gebruik op glas.
Weerbestendig, opaak.
Meer glanzend met hogere temperatuur.
Meng met water of olie.

For use on glass.
Weather resistant, opaque.
Glossier with higher temperatures.
Mix with water or oil.

Lead-free paints
Lood en cadmium vrij.
Voor gebruik op glas of keramiek.
Niet bestendig, opaak, meestal mat.
Meng met water of olie.

Lead and cadmium free.
For use on glass or ceramic.
Non-resistant, opaque, usually matt.
Mix with water or oil.

Reusche Classic Colors

- Strong Blue (7852MB) - 40 g. (1.4 oz)
- Teal Blue (7865MB) - 40 g. (1.4 oz)
- Dark Green (7870MB) - 40 g. (1.4 oz)
- Lemon Yellow (Cd) (7872MB) - 40 g. (1.4 oz)
- Orange (Cd) (7875MB) - 40 g. (1.4 oz)
- Blood Red (Cd) (7882MB) - 40 g. (1.4 oz)
- Pink (7883MB) - 40 g. (1.4 oz)
- Apple Green (7885MB) - 40 g. (1.4 oz)



5 min 649-677°C / 1200-1250°F
Voor gebruik op glas.
Weerbestendig, opaak.
Meer glanzend met hogere temperatuur.
Meng met water of olie.

For use on glass.
Weather resistant, opaque.
Glossier with higher temperatures.
Mix with water or oil.

Reusche Enamels
Glass Stainer's Colors

- White (DX660) - 40 g. (1.4 oz)
- Dark Blue (D2868) - 40 g. (1.4 oz)
- Empire Green (D2866) - 40 g. (1.4 oz)
- Canary Yellow (D2862) - 40 g. (1.4 oz)
- Dark Orange (D2864) - 40 g. (1.4 oz)
- Blood Red (D2872) - 40 g. (1.4 oz)



5 min 566-582°C / 1050-1080°F
Voor gebruik op glas.
Niet bestendig.
Half-transparant, glanzend.
Meng met water.

For use on glass.
Non-resistant.
Translucent, glossy.
Mix with water.

Rüger & Günzel Lead-free BF Colors

- BF9181 White - 100 g. (3.5 oz)
- BF3349 Light yellow - 100 g. (3.5 oz)
- BF1585 Dark (blue) green - 100 g. (3.5 oz)
- BF2457 Blue - 100 g. (3.5 oz)
- BF4101 Black - 100 g. (3.5 oz)
- BP540 Purple - 25 g. (0.9 oz)



10 min 800-860°C / 1472-1580°F
Voor gebruik op glas of keramiek.
Bestendig, opaak.
Meng met water of olie.

For use on glass or ceramic.
Resistant, opaque.
Mix with water of oil.

Metal preparations + lusters

More info on these products: page 17

- Gold (LU121 bright or LU122 matt) - 2.5 g. (0.09 oz)
- Silver (LU128 bright or LU129 matt) - 2.5 g. (0.09 oz)
- Iris (LU300) - 5 g. (0.18 oz)
- Thinner 174 - 25 ml.





PELI Sets

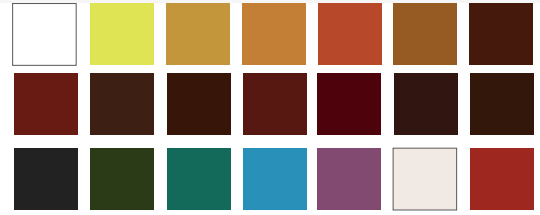
Debitus Discovery offer / Schilderbenodigdheden sets / Painting needs sets

Debitus Discovery Offer

21 grisaille colors, 100 g (3.5 oz) each
5 silver stain colors, 25 g (0.9 oz) each
60 min 620-750°C / 1148-1382°F

A must-have set for any glass painting studio. We also use this extensive color set for mixing with paints from other series. Use with distilled water, gum arabic, or other mediums; with vinegar only after testing.

Een must-have set voor elke glasschilderstudio. We gebruiken ook deze uitgebreide kleurset om te mengen met verf uit andere series. Gebruik met gedestilleerd water, arabische gom of andere mediums; alleen met azijn na testen.



Classic Glass Painting Tools - basic

- Badger brush, professional, 3"
- Sable tracing brush, size 6
- Sable tracing brush, size 4
- Sable tracing brush, size 2
- Sable tracing brush, size 1
- Sable tracing brush, size 0
- Hake brush, large
- Power palette knife

SETS IN WEBSHOP

right-click mouse to open in new tab



Classic Glass Painting Tools - advanced

- Matting brush, 1"
- Power palette knife
- Sable tracing brush, size 2
- Sable tracing brush, size 4
- Sable tracing brush, size 6
- Badger brush, round, size 2
- Badger brush, round, size 4

Set 9 Short Hair DV Stiplers

- Round 128-2, 128-4, 128-6 (short unvarnished handles)
- Flat 7223-1, 7223-2, 7223-4 (long varnished handles)
- Flat 29-2, 29-4, 29-6 (short unvarnished handles)

9 SHORT HAIR Da Vinci brushes as a set. Three are round, six are flat. Perfect for detail work. These brushes can be trimmed yet there's enough variety here to use as is. Only sold as a set.

9 KORTE HAAR Da Vinci penselen in een set. Drie zijn rond, zes zijn plat. Perfecte voor detailwerk. Deze borstels kunnen worden ingekort, maar er is genoeg variatie om te gebruiken zoals ze zijn. Alleen verkocht als set.



Set 8 Hog Hair Stiplers

- Round 4, 6, 8, 12
- Flat 2, 4, 6, 8

Four round, four flat, all different sizes, with short handles of unvarnished wood. These hard economical brushes can be trimmed. Only sold as a set.

Vier rond, vier plat, allemaal verschillende maten met korte ongeverniste houten stelen. Deze goedkope varkensharen penselen kunnen worden ingekort. Alleen verkocht als set.





David Williams & Stephen Byrne



David Williams and Stephen Byrne of Williams & Byrne, an English stained glass studio, have created "The Glass Painter's Method" (www.glasspaintersmethod.com) where you'll find tips, demonstrations and courses about the craft of kiln-fired stained-glass painting. PELI Glass, in conjunction with Williams & Byrne, has developed sets that provide the brushes and tools to complement the courses so you can get the results you want. These are brushes and tools that you'll see in the Williams & Byrne videos!

David Williams en Stephen Byrne van Williams & Byrne, een Engelse glas-in-loodstudio, hebben "The Glass Painter's Method" gemaakt (www.glasspaintersmethod.com), waar u tips, demonstraties en cursussen kunt vinden over het ambacht van gebrandschilderd glas. PELI Glass, in samenwerking met Williams & Byrne, heeft sets ontwikkeld die de penselen, kwasten en gereedschappen aanbieden om de cursussen aan te vullen, zodat u de gewenste resultaten kunt behalen. Dit zijn penselen, kwasten en gereedschappen die u in de Williams & Byrne-video's zult zien!

How to Paint Stained Glass: The Illuminate Foundation Course

Painting with water and gum Arabic

- Power palette knife
- Hake brush, large (goat-hair matting brush)
- Sable tracing brush, size 2
- Badger brush, professional, 3"



W&B SETS IN WEBSHOP

right-click mouse to open in new tab

How to Shade Stained Glass: The Shadow Course

Creating shadows using glycol

- Palette knife
- DV 1570, size 12 (large synthetic applicator)
- DV 1570, size 10 (medium synthetic applicator)
- DV 1270, size 8 (tracing brush with synthetic hair)
- DV 5076, size 20 (flat synthetic matting brush)
- Badger brush, round, size 6



How to Work with Silver Stain: The Glorious Transformation

How to stain with oil or glycol

- Palette knife
- DV 1570, size 10 (medium synthetic applicator)
- DV 1270, size 6 (fine synthetic applicator)
- Badger brush, round, size 6

